

Intelligence Enhance Wisteria Blossom



Ming-Li Huang
Principal of ChenDu ELDU Wisteria Primary School



成都师范银都紫藤小学
Chengdu ELDU Wisteria Primary School

Principal/ ChenDu ELDU Wisteria Primary School



**Senior Teacher/ Junior High School
Leader/ChenDu High School & Primary School
Mathematics Education
Key Educator of Sichuan Province
Osaka University, Japan Osaka Education
Mathematics Educator International Researcher**

Direction of Research

- **The establishment of Interactive Smarter Classroom via mobile Technology**
- **School Big Data Management**



成都师范银都紫藤小学

Chengdu ELDU Wisteria Primary School





成都师范银都紫藤小学
Chengdu ELDU Wisteria Primary School

- ✧ **Wisteria Motto : Healthy, Intelligent, Noble, Happy**
- ✧ **Core Concept : Respect for life. Magnify personalities.**
- ✧ **Education Features :**
 - School managed by big data**
 - Maker + Folk Courses**
 - Building the green, technologic, and scholarly environment**
- ✧ **Modeling Method : Accommodate with one's essential , build the foundation, Develop characteristics**
- ✧ **School Mission : A modern person who is able to adapt oneself to the society.**



成都师范银都紫藤小学
Chengdu ELDU Wisteria Primary School

- ✧ **Founded: August, 2015**
- ✧ **Category: Public Primary School**
- ✧ **Scale: 30 classes**
- ✧ **Property: 18741.7m²**
- ✧ **Facility: Buildings-23929m²**
Parking Space 46 units
(Plane 8 units/Underground 38 units)
Other parking space 260 units



紫藤苑内
一步一风景，一眼一情致
学校，孩子们家以外的家
这里环境怡人，书香萦绕
老师，孩子们父母以外的父母
我们坚守信念，倾心付出
不仅为了优秀
更因这让我们幸福









成都师范银都紫藤小学
Chengdu ELDU Wisteria Primary School

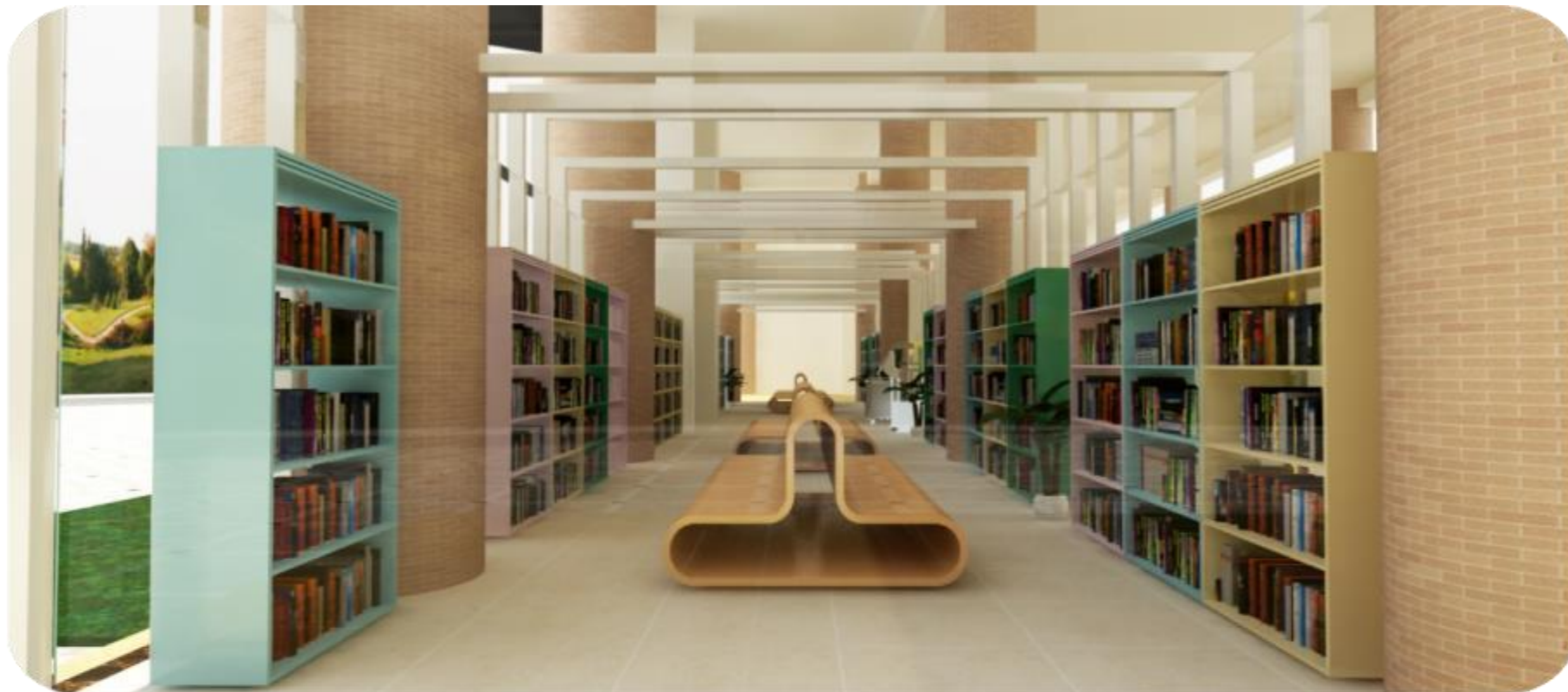




成都师范银都紫藤小学
Chengdu ELDU Wisteria Primary School

Vision---ELDU Wisteria Intelligent Library

Gallery

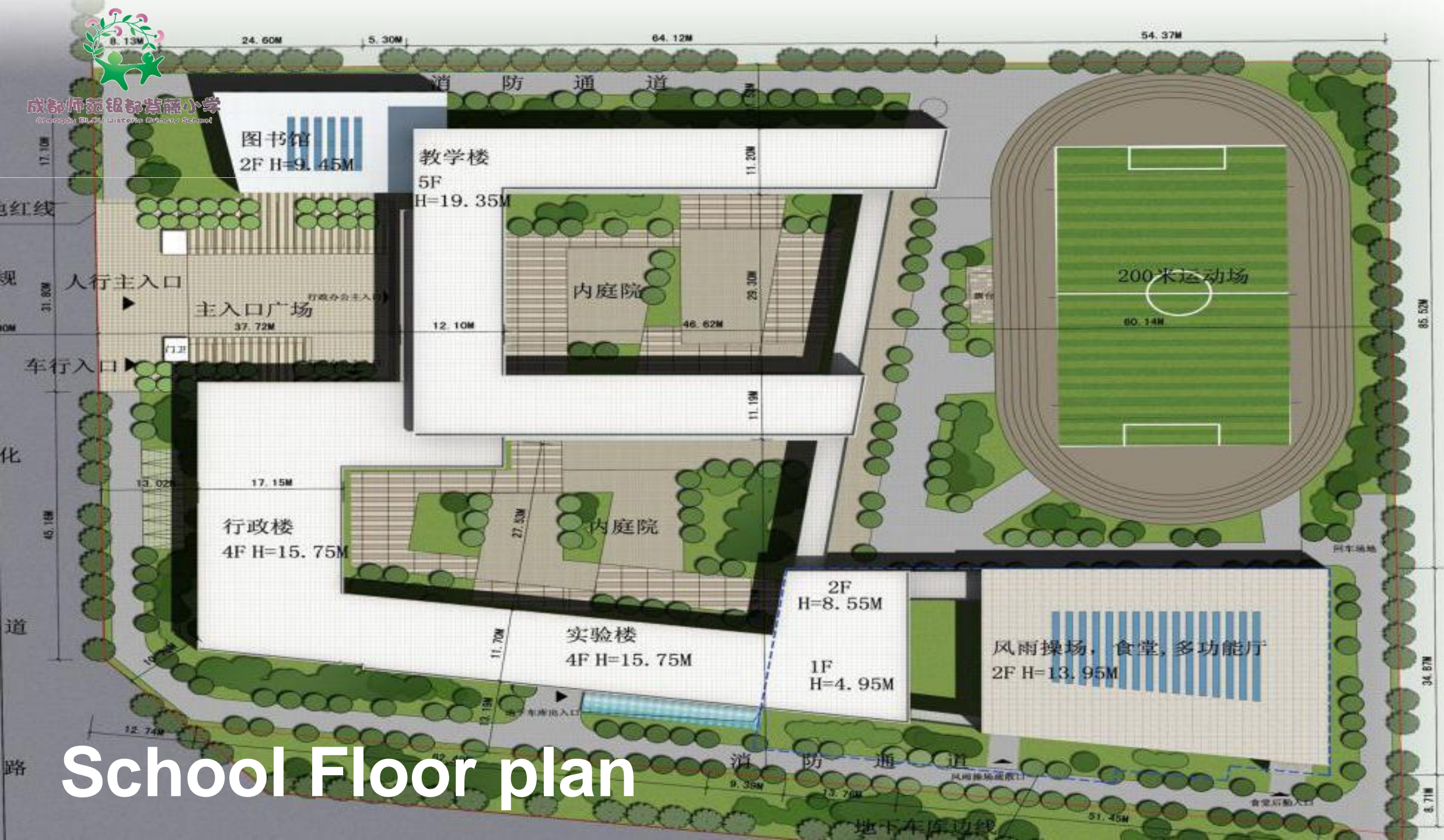




成都师范银都紫藤小学
Chengdu ELDU Wisteria Primary School

Corporation Sponsored Subway Publicity





School Floor plan





成都师范银都紫藤小学
Chengdu ELDU Wisteria Primary School

青草一丛，紫花一株
笑颜处处，紫藤花开一世界
阳光下温婉的微笑，风雨后坚韧前行
一心一念一菩提，吾心安处是教育





成都师范银都紫藤小学
Chengdu ELDU Wisteria Primary School



2015年8月28日

天格外蓝，风格外轻，阳光格外灿烂
成都师范银都紫藤小学迎来了第一批小精灵.....



成都师范银都紫藤小学
Chengdu ELDU Wisteria Primary School

沐浴秋日的阳光
捕捉秋天的符号
捡拾秋天的印记
一群紫藤小精灵
来到麓湖红岩石公园……





成都师范银都紫藤小学
Chengdu ELDU Wisteria Primary School

播种行为，收获习惯

播种习惯，收获性格

播种性格，收获命运

午餐礼仪，注重细节

从大处着眼，小处着手





成都师范银都紫藤小学
Chengdu ELDU Wisteria Primary School





成都师范银都紫藤小学
Chengdu ELDU Wisteria Primary School







一株紫藤
阳光雨露的滋润下
茁壮成长

一树花海
爱与慈的关怀中
铺陈开来.....





成都师范银都紫藤小学
Chengdu ELDU Wisteria Primary School

Without the culture, the statistics are just some figures.

Without the temperature, the architecture is merely concrete.

In Wisteria

We let the architecture made of figures & concrete become a knowledge palace, a friendly stage, an exhibition of the good & beauty, and a perfect place to raise healthy personalities.



成都师范银都紫藤小学
Chengdu ELDU Wisteria Primary School

Learn about Wisteria -Respect For Life



一树紫藤，参差交错，顺差异自然共生

一树紫藤，蔓延铺陈，以博爱滋养根本

一树紫藤，一处风景，花开无痕却有声

我们，以诗意的情怀，栽下一株紫藤……

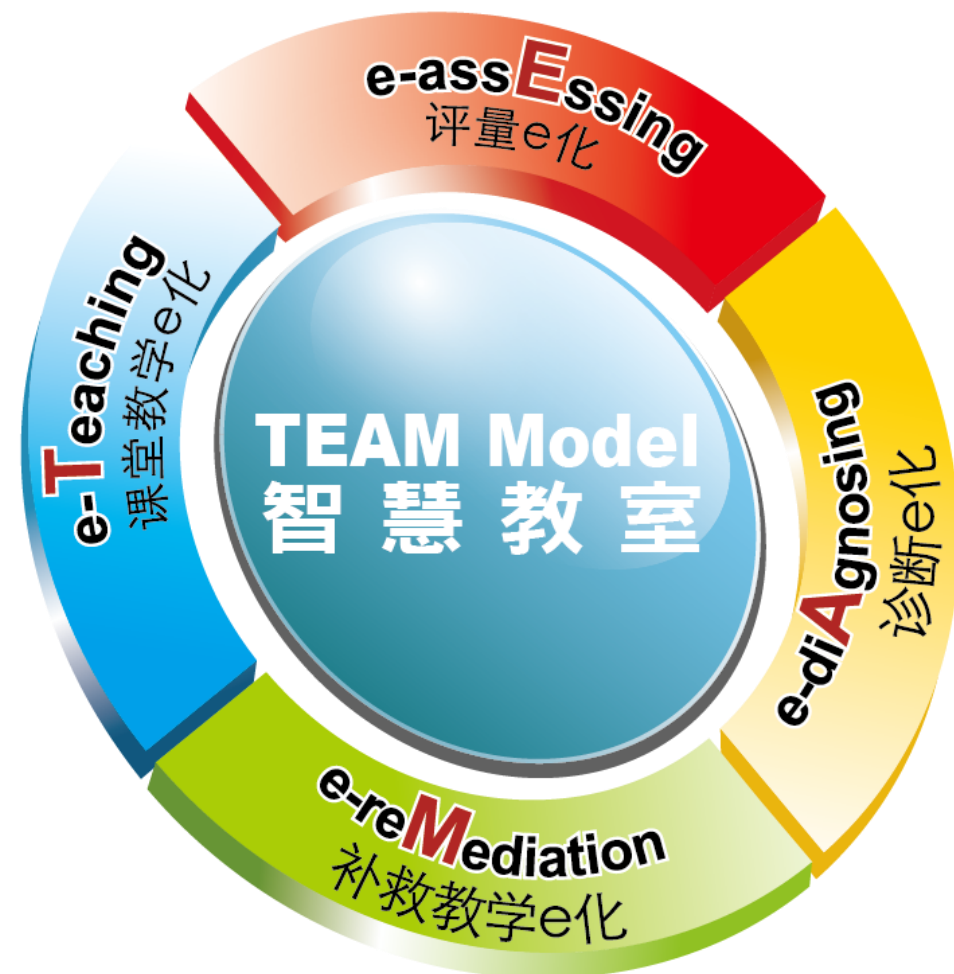


Data is a scientific record of life.





The need and think of Smarter School



The Choice

- ✧ 2014 in Ningbo, learn about Hiteach Interactive Teaching System
- ✧ The advantages of friendly operation, tangible appliance to ideas, and instant evaluation.
- ✧ Teaching lessons become more effectively scientific due to the elements of professional R&D team, potent market promotion, and globalization...etc
- ✧ We naturally long for splendid products.

Put into Practice

- In the autumn of 2014, in order to promote the activities of innovative class, we start to put “Smarter Classroom” into practice. With the support of mobile technology & smarter lecture system, it enables teaching to include the basis for mind development, advanced interactions and academic assessment along with diagnostic technology.

The result as below

1. It succeeds in personalizing each student and they are involved in the teaching process.
2. It succeeds in visualizing students' ideas. Every student participates in evaluation feedback in no time.
3. The learning progress is automatically recorded in system. Digitalization makes it more scientific to analyze statistically. It enhances teachers' attention to each student and the effective interaction.

The smarter lecture system is commonly adaptive and high-efficient.



Power的自我定義

Power是來實現老師教學夢想的Power，

老師有了「Power」，教學就會更有「Power」！

Power(拋餌)要拋出創新改變教育之餌，

點燃校長與老師發展智慧教育的信念與熱情！



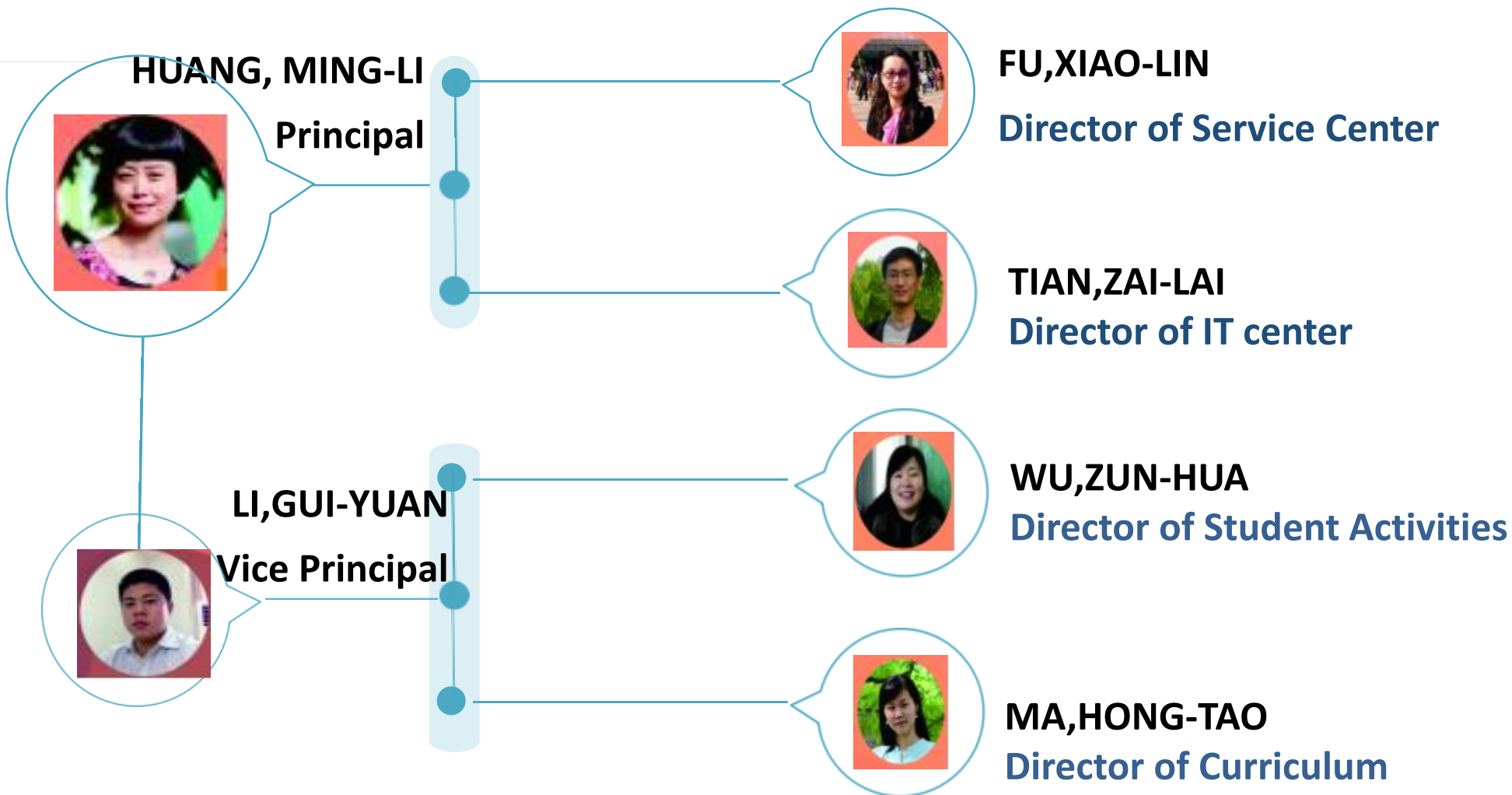
成都师范银都紫藤小学
Chengdu ELDU Wisteria Primary School

Blossom Wisteria Care for People

Teachers



成都师范银都紫藤小学
Chengdu ELDU Wisteria Primary School





成都师范银都紫藤小学
Chengdu ELDU Wisteria Primary School

Mathematics

shuxue jiaoshi

01



Section Chief of Curriculum
MA, HONG-TAO



Mathematics Teacher
DONG, HONG-YONG

02

03



Mathematics Teacher
TIAN, ZAI-LAI



Mathematics Teacher
FENG, LIAN

04



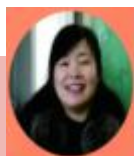
Language

01



Section Chief of Curriculum: GUO,MING-CHUN

02



Literature Teacher: WU,ZUN-HUA

03



Literature Teacher : FU,XIAO-LIN

04



Literature Teacher : YANG,XIA

05



English Teacher: LI,JING



成都师范银都紫藤小学
Chengdu ELDU Wisteria Primary School

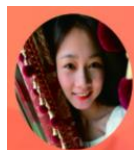
General



Section Chief Of Curriculum: LI,GUI-YUAN



Physical Education Teacher: HU,SHAN



Art Teacher: JIA,DI



Music Teacher: XIE,YI



Trees in the forest construct a view.
Good trees in the forest compose a landscape.

- I. To adopt naturally
 - ✧ Make a plan, step by step.

“紫藤花开”——成都师范银都紫藤小学智慧学校建设启动活动及智慧学校典型进化历程分析

2015-09-25 智慧教育人人通

Intelligent School Evolution Models



成都师范银都紫藤小学是成都市高新区今年新开办的公立学校，也是区政府重点打造的教育信息化试点学校。

黄敏丽校长在成都师范银都小学先后从事教学和教育信息化管理工作，期间赴国外长期学习，兼具教学和信息技术素养，极富科技领导力。



成都师范银都紫藤小学
Chengdu ELDU Wisteria Primary School







成都师范银都紫藤小学
Chengdu ELDU Wisteria Primary School

Encouragement & Support From Taiwan Habook

Information Technology

天生的現代化好學校·成都師範銀都紫藤小學



吳恆威Power
TEAM Model智慧教育創辦人

銀都紫藤小學，是一所基於現代教育理念，全新打造的智慧教育示範學校。創辦人黃敬龍校長與創辦團隊具有深厚的智慧教育發展理念，他們致力於專研海內外信息技術與教育教學深度融合之實踐經驗，在學校創辦之初，導入智慧教室專家系統，發展具有應用教育大數據與信息技術等特色的現代化學校。我多年來，在各地輔導許多有十年、百年歷史的老校，幫助他們革新教學理念與技術，其中，最大障礙就是「改變」，已經養成的教學思維與習慣，實在太難改變了。紫藤小學，是全新的學校，在專家引領與專業團隊領導下，不需要經過「改變」，直接「植入」現代教育基因，就像是「天生」的現代化好學校，是一所我們理想中的學習天堂。





成都师范银都紫藤小学
Chengdu ELDU Wisteria Primary School

✧The know-how of “trial lecture”



Ms. Chung
Senior Teacher of elementary Chinese

Poem writing class 《Shadow》





“Send Message” to dig, to broaden students’ thinking horizon

T: “What does shadow mean to you? ”

S: (use “Send Message” function) collect 30 ideas in a second

Shock: “hug” “drawing book” “follower”. Teachers and parents shocked by Students’ imagination.

Understanding: What aspect you take determines the world you see.

Chinese Class + Smarter Classroom. Children know more about “shadow” and can make comparison of ideas and thoughts.



成都师范银都紫藤小学
Chengdu ELDU Wisteria Primary School



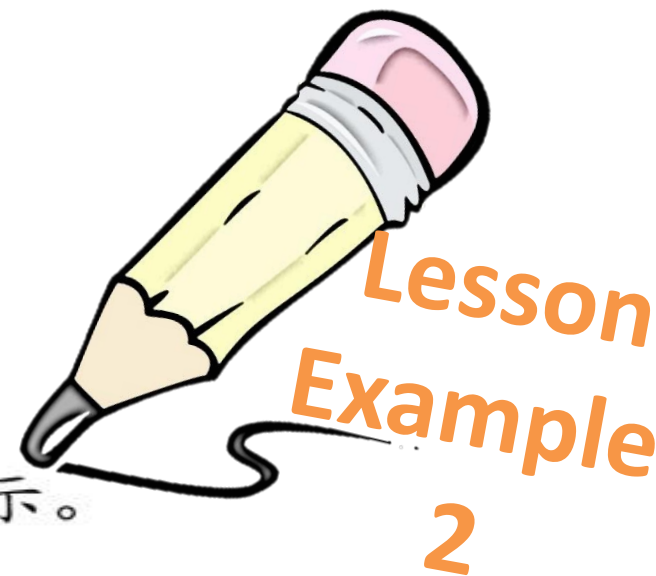
Ms. Ma
Senior Teacher of elementary math



成都师范银都紫藤小学
Chengdu ELDU Wisteria Primary School

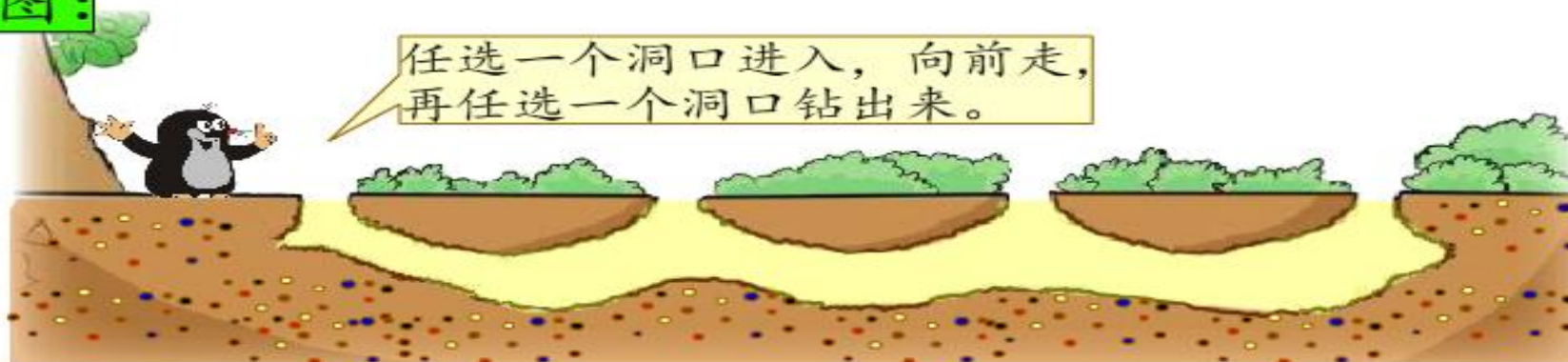
One-to-One Trial lesson in student-tablet

One picture brings about the impact and thinking



有多少条不同的路线？用画一画的办法来表示。

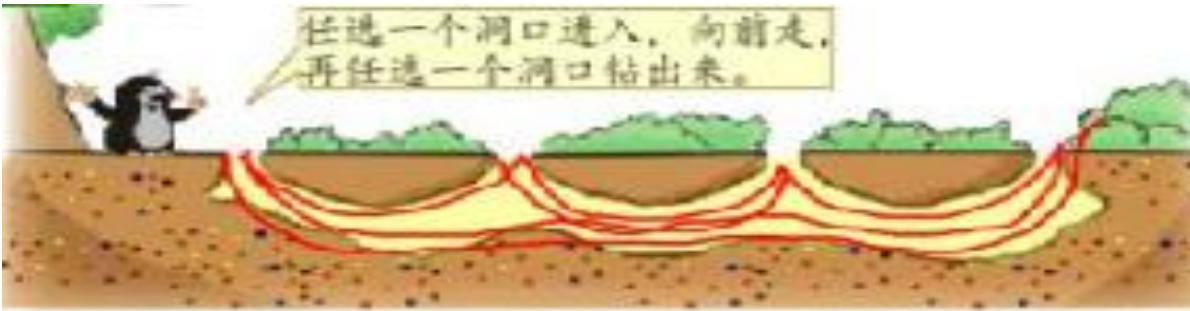
原图：



示意图：

4th grade “Mathematics game” 《How many routes are there?》

Something amazing happened upon broadcasting this picture to students.
70% students chose to draw on the original picture.
About 30% drew semi-abstract patterns.
It appeared students didn't use "figure- section" model to solve the problem as we'd assumed.



On the original picture



Semi-abstract pattern





成都师范银都紫藤小学
Chengdu ELDU Wisteria Primary School



We are full of courage. It originates from the certainty and tangibility of how students think. We welcome changes. The lessons after changes won the championship in ChenDu & Sichuan mathematics competitions.

II. Fully involved, Develop Intelligence

- ✧ **full preparation of “ Trial lesson”. The seeded teachers use the latest technology to present lesson example.**
- ✧ **the information sharing and guidance will help the team players to form the intelligent phenomenon.**



心向大海便有动力扬帆起航，不惧大海才有能力扬帆起航。TBL从未知到熟悉，从学习到运用，它是全新的起点，是每一个紫藤人展望的前路。

紫藤教师无论学科无论年龄，全部开始学习并使用HiTeach教学系统，实现着智慧教学的常态化，真正做到了100%的全覆盖。面对智慧课堂，前路漫漫，“路漫漫其修远兮，吾将上下而求索”。

学校依托班班通设备，在低学段建设入门级的智慧教室；在中高段引入TBL智能模式，实现群组智慧教室；2016年还将计划建设云端智慧教室。



课 题：《谁画的鱼最大》

学 科：美 术

设计意图：

借住“智慧教室”师生交互平台，在作品互评交流中激发孩子创新意识。

教学亮点：

- (1)利用平板及时反馈学生作品，学生互相点评、互相学习。
- (2)使用的评价的激励功能，软件评价功能对学生在本节课制作的作品进行积分，激发学生自由表现、大胆探索。





紫藤智慧 WISTERIA WISDOM

客观数据背后是科学的分析、对规律的尊重以及理性的期待！

课 题：《做个加法表》

学 科：数 学

设计意图：

本节课重难点是巩固10以内的加法计算，发现规律并制作完成10以内的加法表。利用hiteach教学软件配合反馈器和平板电脑，采取小组合作学习的模式，可以有效突破本节课重难点。

教学亮点：

- (1)利用反馈器进行10以内的口算练习，可以最大程度提高练习和检测的效率，同时激发学生学习的兴趣。
- (2)通过分组讨论的方式，发现10以内加法算式的简单规律，并且通过平板电脑将小组讨论结果及时反馈给老师。
- (3)利用平板拍照功能上传学生作品，利用反馈器进行及时教学评价。



紫藤智慧 WISTERIA WISDOM

TBL智慧课堂，课程呈现更直观，时效更快捷，成效更精准！



课 题：《月亮的味道》

学 科：语 文

设计意图：

本案例尝试借助智慧教室的交互式平台和IRS反馈器，搜集并分析学生的思维，了解学生对绘本理解的深度与广度。培养更好的倾听意识，激发学生阅读的兴趣，并可有针对性的推荐绘本。

教学亮点：

- (1)利用IRS反馈器，了解学生对于“分享”这一问题的看法，在教学的过程中渗透友谊、分享与互助。
- (2)利用平台的及时互动功能时时紧抓学生注意力，运用HiTeach的随机抽取功能，打破老师选人的课堂盲区，让每个孩子都置身课堂，融于课堂，提高课堂时效。

Smarter Lecture 《In the forest》



用pad抢答，选择，投票，发飞讯，
推送文本，展示作品，小组PK等。
真正实现了面向每一个孩子的个性化培养





Children use their pads to toss-up, choose, vote, send messages, broadcast the text, exhibit works, and group competition.....etc. It truly realizes the idea to personalize every kid. This new technology makes it easy to operate. The feedback is prompt and students love to be involved in class than before.



Sharing

In order to improve the education quality, there're some events organized as below

- **November, 2014. Teacher Ma, Hon-Tao demonstrated Hilearning Smarter Education System in ChenDu Teachers' Development Center**
- **January, 2015 The teacher group of 40 people from Education Bureau in Yangling, Shaanxi visited to learn the application of "Hilearning Education System".**
- **May, 2015. We organized "Global TBL Smarter Education Summit" - The regularization of Interactive Smarter Classroom via mobile Technology**
- **May 23rd ELDU Primary School "Interactive Smarter Classroom via mobile Technology" was selected as one of the best case studies in Sichuan province. Sorted in the exhibition of "National Primary and Junior High school Educational Information Application", joint organized by Education Bureau and UNESCO in Qingdao International Convention Center. This event keynoted as "The evolution of Information Technology and Future Education" gathered overseas education officers, experts, principals, teachers, and enterprise representatives.**



成都师范银都紫藤小学
Chengdu ELDU Wisteria Primary School



Advantages

Professional Teachers

Enterpriser Passion

New Concept

Leadership Support

Education Experts



成都师范银都紫藤小学
Chengdu ELDU Wisteria Primary School



Advantages

TEAM

Courses

Adapt HiTeach System

Regular Teaching

100% coverage



Question in mind

How to choose and apply it sufficiently?

With the increased and advanced usage of IT gadgets and educational software, there are hundreds of educational options available for children. How do we choose the suitable one for school development and increase the efficiency of education?



成都师范银都紫藤小学
Chengdu ELDU Wisteria Primary School

Occurred dilemma: Teachers' adaptation?

How do we enable teachers to combine their teaching experience with innovative technology and new concept to spontaneously implement the related function?



成都师范银都紫藤小学
Chengdu ELDU Wisteria Primary School

Vision of Intelligent Education Development



- Utilize ClouDas and IES to collect teaching statistics. Analyze big data to provide valuable advice for students and teachers.
- Smarter Education offers the basis for teachers to develop their expertise.
- Discover the instructional model based on “the internet” through the application of Smarter Classroom. Confident to construct [Future Classroom] and [Future School]





成都师范银都紫藤小学
Chengdu ELDU Wisteria Primary School



We're young. We work hard day and night !
We're young. We work hard against the weather!





成都师范银都紫藤小学
Chengdu ELDU Wisteria Primary School

Reflections

- Awareness of systematic thinking
- Accurate information sensation
- Courage for continuous innovation
- Generosity to accomplish others
- Expectation for next generation